

# **Berwick Film and Media Arts Festival Accessibility Document for Visitors**

**Main contact at BFMAF for accessibility enquiries:** Ben Lewis

**Telephone:** +44 1289 303355 (Please leave a voicemail if there is no response, will respond within a week)

**Email:** [ben@bfmaf.org](mailto:ben@bfmaf.org) (4 days a week, will respond within a day)

## **Accessibility Document Introduction Statement**

This accessibility document was created by artist and accessibility consultant, Laura Lulika, in January 2025.

*Berwick Film and Media Arts Festival is a festival which takes place annually across several venues in Berwick-upon-Tweed. Many of the venues are historical buildings that have not been built with accessibility in mind. I hope this clear and thorough document will allow visitors to make informed choices and plan their visits more easily. As with all of my documents, I approach accessibility from a holistic and intersectional framework, therefore it includes physical and sensory accessibility information, helpful information for those attending the festival with children and general information about the town. Learning, action and evolving are key to improving accessibility and this document is just a starting point to offering better accessibility at Berwick Film and Media Arts Festival and to gain an understanding of how to improve accessibility in the future.*

*All venues were attended in-person apart from the inside of the Maltings Cinema at the Barracks and the inside of Magazine, however we were able to see the external in-person and photos of the inside. The toilets of The Peace Church were under construction during this audit.*

*All of my accessibility documents are open to feedback for further development. Please feel welcome to contact me if you would like to give feedback about this document:  
[yonabout@outlook.com](mailto:yonabout@outlook.com)*

## **Berwick-upon-Tweed Introduction**

Berwick-upon-Tweed is a historical town in Northumberland. It is the Northernmost town in England and it is 2.5 miles from the Anglo-Scottish border. It has a population of about 12,000 people.

Berwick is well known for its medieval town walls, Britain's oldest Barracks buildings and for having a beautiful coastline. It attracts tourists who come for the history and nature.

Berwick has one train station, Berwick-upon-Tweed Railway Station, and many people use cars, taxis or the local bus service to get around. See Useful Contacts for local taxi rank phone numbers. More travel information is also available on <https://bfmaf.org/visit-access/travel/>.

When using the pavements in Berwick, be aware that many are narrow and the surface varies from cobblestones, pavers and concrete. There are pavement drop curbs and tactile paving at crossings in the town centre.

Berwick doesn't have a big chain supermarket in the town centre, instead there are some small chain shops and some independent grocery shops. There are some large chain supermarkets, Morrisons and Aldi are up the A1167 in Loaning Meadows. Across the river in Tweedmouth, there is a large Asda and Tesco.

### **About Berwick Film and Media Arts Festival**

Berwick Film & Media Arts Festival (BFMAF) is an artistically ambitious organisation for new cinema and artists' moving image based in North Northumberland on the English border with Scotland.

A work in progress, leading through collaboration, it has a resolute commitment to the mutual development of the artists, audiences, filmmakers and programmers that make the festival possible.

The Festival enacts pluralist ideas of contemporary cinema, its history and curation. Short, medium or feature-length Festival selections can include arthouse, documentary or genre cinema; artists' moving image and sound; world premieres and freshly restored archival titles; or live, installation-based or performative works of cinema. Together, they hold shared and overlapping interests in asking what new cinema might be.

BFMAF also strives to understand and work towards optimal exhibition conditions for artists and filmmakers' work within the resources and contexts it has available. In evaluating this, the accessibility of audiences and communities that it is involved with – locally, regionally, nationally and internationally are of utmost consideration.

We are striving to make the festival accessible for all audiences and will continue to update the tools and information we have available in the lead up to the festival.

Please do contact us directly at [info@bfmaf.org](mailto:info@bfmaf.org) if you have any individual access requirements and we will do our best to assist.

Please visit this webpage for further information: <https://bfmaf.org/visit-access/accessibility/>.

### **Staff and Volunteers**

Staff and volunteers will be present at all venues during the festival. They can be identified by their blue lanyards with the Berwick Film and Media Arts Festival logos on and pink hi-vis vests. Team member and Volunteer lanyards will state "Staff" and "Volunteer" on them. If you need help or support while attending the festival please speak to one of our staff or volunteers. Our staff have undertaken Deaf Awareness training and key team members have undertaken Safeguarding and Health and Safety training.





## Venues

All venues are marked on an interactive Google map available here: <https://bfmaf.org/visit-access/>

Print versions of the Town Map will be available at the Info Desk, located at the Maltings Cinema.

The opening times of the venues during the festival are:

The Maltings Cinema: 10am - 12am

The Maltings Cinema at the Barracks: 10am - 11pm

Exhibition venues will be open 12:00 - 17:00 on Thursday 27 March 2025 and 10:00 - 17:00 Friday 28 - Sunday 30 March 2025. The exhibition venues are:

Town Hall Council Chamber  
The Magazine  
The Gymnasium  
22 Bridge Street - The Burr  
St. Aidan's Peace Church

Magdalene Fields Golf Club: 10pm - 12am

All Exhibition venues will have A-Boards outside with details of the film showing and there will be Festival banners outside all venues.

If you cannot access any of the venues, please speak to a member of staff or email [info@bfmaf.org](mailto:info@bfmaf.org) and we can provide you with access to the film online.

Details of an online version of the Festival will be released in due course. It will be available a month or so after the Festival.

Guidedogs and Assistance dogs are welcome in all venues.

### **Pre-booking**

If you have any access requirements, please email at [info@bfmaf.org](mailto:info@bfmaf.org) with details of the screening you will be attending and we will make the necessary arrangements.

If you are d/Deaf, we will reserve you front-row seats so that you have clear sight lines for Descriptive Subtitles and BSL interpretation. If you are coming to the Eri Makihara programme on Friday 28 March 2025, please email at the address above as we have a number of seats reserved for d/Deaf audiences.

### **Quiet Spaces**

Festivals can be overwhelming and overstimulating. Berwick is generally a quiet town and has many pockets of quiet nature and green space. If you are feeling overwhelmed or unwell and need to access a quiet space inside a festival venue please speak to a staff member or volunteer and they will support you. If you need a quiet space and you're able to safely leave the venue, all the venues have quiet spaces immediately outside of them and a staff member or volunteer can support you in finding somewhere more comfortable outside.

A quiet space will be available at the Berwick Youth Hostel Association. For further details please visit: <https://bfmaf.org/visit-access/accessibility/>

### **Covid19 and Virus Prevention**

If you require a face mask, hand sanitiser or assurance of ventilation in any of our venues, please speak to a member of staff at the Info Desk at the entrance to the Maltings Cinema.

### **Anti-Racism**

The racial diversity of Berwick upon Tweed is 97.8% white which is a higher percentage than the average percentage of white people across the UK. If you feel uncomfortable, please speak to a member of staff. If you would like to request a buddy while you are travelling around town, please speak to a member of staff or email [info@bfmaf.org](mailto:info@bfmaf.org).

### **Financial Barriers**

We would love to have you attend the Festival and hope the following options may make visiting more financially viable for anyone who would like to attend. You can request a discount code if you are facing financial barriers, please email [info@bfmaf.org](mailto:info@bfmaf.org) to get further guidance on receiving a discount code for screenings in The Maltings Main House. For early-career filmmakers and artists, we have a limited number of free Festival passes and can advise on the cheapest accommodation options. These passes are reserved for unwaged or low waged guests who would otherwise not be able to attend. Contact us directly at [info@bfmaf.org](mailto:info@bfmaf.org) for more information.

### **Subtitles, SDH and Audio Descriptions**

This year, we are aiming to have Descriptive Subtitles (SDH /captions) available for all dialogue across the programme. Any exceptions will be clearly listed on the website. Details for the subtitles available for each film are listed on the programme page for every viewing.

Please check the website listings for further details. We unfortunately cannot offer Audio Description for screenings at this iteration of the Festival.

Content notes are listed where appropriate for each film listing and can be found in our Programme Catalog. Additionally, you can email us about any concerns at [info@bfmaf.org](mailto:info@bfmaf.org), or ask a member of staff or volunteer on site at the Festival for further information.

### **Large Print and Text Only Guides**

**Large print and text only versions** of our Catalogue and User Guide will be available from our website. Pick up physical copies at our welcome desk at The Maltings during the festival.

### **Carers**

Carers accompanying audience members receive free tickets to screenings. Please enquire at The Maltings' Box Office if buying tickets on-the-day or email [info@bfmaf.org](mailto:info@bfmaf.org) for further guidance.

### **Venues**

**Thorough physical and sensory accessibility information and travel information for all venues used during the festival.**

#### **Venue Name: The Town Hall Chambers**

Address: 16 Marygate, Berwick-upon-Tweed TD15 1BN

Website: <https://berwicktownhall.org.uk/>

Google Maps: <https://maps.app.goo.gl/KrWe5Jpk6841KuoX6>

BFMAF Venue Webpage: <https://bfmaf.org/location/town-hall-council-chamber/>



#### **Venue Introduction**

Berwick Town Hall is a Grade I Listed building in the town centre of Berwick-upon-Tweed. It is a large historical stone building with a clock tower and a cafe. The Town Hall serves as a civic meeting place, wedding and event venue, and consists of three floor levels. This venue is not step-free and has two stair-climbers. This venue has an adapted toilet.

#### **Transport and Parking**

**Bus:** The nearest bus stop is Golden Square which has buses; 60, 67, 266, 267, 464, 477, B1, Berwick Hoppa, X15, X18. The journey from the venue to bus stop is 5 minutes at a leisurely pace.

**Train:** The nearest train station is Berwick-upon-Tweed. The journey from the station to the venue is mostly flat and would take 15 minutes at a leisurely pace or a 3 minute drive. Some pavements are very narrow.



Taxis and Cars: Some cars may park for a short stay in the pedestrianised side entrance during deliveries or for taxi drop-offs and pick-up at request. The other side and the back of the building are not pedestrianised and could also be used for taxi drop-off and pick ups.

## Entrance

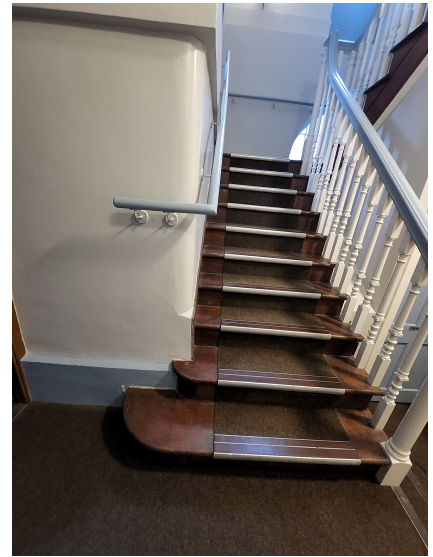
There are two entrances into the venue. The side entrance is on the ground floor on a pedestrianised street. The front entrance is on the first floor up a large set of stone steps. This entrance is also pedestrianised outside. The pedestrianised flooring outside is large square paving stones with some small sections of cobblestones.

The side entrance is for those arriving by foot and ambulatory mobility aid users. The entrance is through non-automated double doors which will be held open. There are two shallow stone steps into the building with no ramp and no handrail. The venue is on the first floor up 22 steps with a landing halfway and handrails both sides. There is no lift, there are two stair-climbers.

If you are a wheelchair or mobility scooter user and need support to get up the stairs, you will need to ring the intercom bell on the right of the side entrance double doors. Ambulatory mobility aid users that cannot walk up the steps and can transfer from their chair or scooter, will need to use the stair-climber with the support of Town Hall staff to get up the side entrance stairs. The maximum weight for this stair-climber is 130kg.

If you are a wheelchair user that needs to stay in your chair you will need to use the intercom bell at the side entrance to contact the Town Hall staff and then go around to the front of the building to the front entrance. They will meet you there with a stair-climber for non-ambulatory wheelchair users which can be used to get up the 17 steps to the front entrance door with the support of Town Hall staff. The maximum weight for this stair-climber is 200kg.





If you accessed the venue through the side entrance, the stairs will take you to a corridor landing on the first floor, you need to take a left and then through the first door on the right. All of the single internal doorways are 81cm wide. The doors are not automated but are held open. The doorway will take you to a central room with a blue carpet floor, the venue room is on the left up two shallow carpeted stairs with no ramp.

If you accessed the building through the front entrance, you will be led through a large hall with a wooden floor to the venue room. There is nowhere to store or park wheelchairs or mobility scooters at the venue.

### **Venue Room Physical Access**



**Room Description:** A medium sized meeting room with front facing rows of armchairs facing one projection screen.

**Doorways:** Doors are not automated but are held open. The width of the venue room doorway is 125cm. The internal single doorways into hallways and toilets are all 81cm wide.

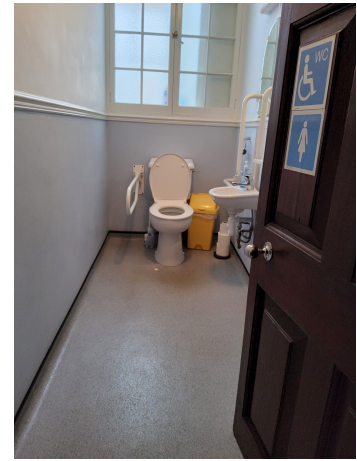
**Steps:** This venue has a lot of steps and no ramp in use. For the two large sets of steps at the entrances there are two stair-climbers, an ambulatory and non-ambulatory option. For the two shallow steps at the side entrance and the two shallow carpeted steps into the screening room there is no ramp, venue staff have suggested supporting wheelchair users over these steps if required.





**Seating:** There are two types of seating in the room; Padded arm chairs with padded backs and hard wooden arms and a bench along the back of the room with a padded seat and a hard wooden back. Armchairs are removable and space will be made for wheelchair users.

**Toilets:** The toilets are gendered. The gendered 'Women's' toilet is on the first floor landing at the top of the stairs. The gendered 'Mens' toilet is on the ground floor landing at the bottom of the stairs. It is down 3 stairs with no ramp. The doors are not automated. The accessible toilet is also the gendered 'Women's' toilet on the first floor landing at the top of the stairs. It has grab bars and a lowered sink. It has no emergency pull cord. The measurements of the toilet are room width 105cm, at the narrowest point from sink to wall 86cm.



**Flooring:** The side entrance porch on the ground floor has brown carpet. The front entrance porch on the first floor has square flagstones that are slightly uneven. The inside stairs are carpeted with stair nosings. The carpet is brown with black and silver nosings which provide some contrast. The landings have bright red carpet. The central room on the first floor has blue carpet. The screening room has bright red carpet. The large hall has a light brown varnished wood flooring. The toilets have grey square lino tiles with white speckles. All apart from the flagstones are smooth, flat and even.

**Temperature:** Entrances and stairways are cool, the rooms are slightly warmer.

### **Venue Sensory Access**

**Lighting:** Warm lighting, chandelier style ceiling lights in rooms and warm uplit lamps in stairway, natural lighting from windows. There is a fluorescent light above the front entrance door inside the porch. There is fluorescent and natural lighting from the window in the toilets.

Patterns: Mostly muted colours with some reds and blues. No noticeable high contrast geometric patterns. All rooms on the first floor have patterned wallpaper in a neutral colour scheme.

Smell: Old building smell, no noticeable strong odours.

Food/Drink: There is a cafe through a separate entrance on the ground floor called The Town Hall Cafe open Mon-Sat 10am-2.30pm, closed Sunday. They offer hot and cold drinks, snacks, cakes and meals. The Town hall is also on the high street and is surrounded by other cafe and restaurant options.

Emergency Evacuation: Emergency exits are marked and staff will assist you to the nearest exit which is through the entrance room, hall and front entrance or down the stairs to the side entrance. There is one Evac chair and a trained member of staff will be present.



### **Event Description and Access:**

Flashing Lights/Strobe Lights. For further information on the film showing at this venue please visit this webpage: <https://bfmaf.org/programme/just-above-the-tear-duct-on-each-side/>

### **Venue Name: Magazine**

**Address: Magazine (Gunpowder for the Garrison) The Walls, Berwick-upon-Tweed TD15 1JG**

Website: <https://historicengland.org.uk/listing/the-list/list-entry/1041697>

Google Maps: <https://maps.app.goo.gl/K4ftNdsyfTKG1vsq6>

BFMAF Venue Webpage: <https://bfmaf.org/location/the-magazine/>



### **Venue Introduction**

Magazine is a small stone 18th Century heritage building, used to store gunpowder. The venue is inside the Berwick walls accessed only via the public footpath. This venue is not barrier free or step free.

### **Transport and Parking**

Bus: The nearest bus stop is Number 6 Church Street which has buses; B1, 32, X18, 60, 67, 235, Berwick Hoppa. The journey from the venue to the bus stop is 7 minutes at a leisurely pace.



Train: The nearest train station is Berwick-upon-Tweed. The journey from the station to the venue is mostly flat and takes 25 minutes at a leisurely pace or a 4 minute drive. Some pavements are very narrow.

Taxis and Cars: There is on-street parking on Ravensdowne next to the entrance to the footpath. There is a space for short stay drop-off right by the entrance gate to the footpath. From the gateway to the venue via the footpath is about 1 minute at a leisurely pace.



### Entrance

To enter the venue, you must first enter the Berwick wall footpath. There are two options, one via the gate on Ravensdowne adjacent to the venue, this is the step-free option and takes about 2 minutes at a leisurely pace from the gate to the venue. The second option is via the footpath entrance next to the allotments which is up 8 steps with one handrail, has a gentle incline and takes about 4 minutes at a leisurely pace to the venue. There are some steep inclines on the surrounding footpaths and the footpath is narrow. The footpath is raised from the entrance to the venue and you either need to go down a grass verge from the footpath to the gate or around from the side of the venue to stay on flat grass. Both the footpath and the grass are uneven surfaces.

The venue is surrounded by a stone wall with a large wooden gate which will be open. The gateway has a small stone lip with no ramp. From the gateway to the venue entrance there is grass with no footpath. The entrance door is accessed via 3 stone steps with no handrails or ramp.





## Venue Physical Access

### Room Description:

An arched brick room painted white with barrels stacked either side of a path. There are many vertical and horizontal dark brown wooden beams throughout the room. There will be a projector and screen.

### Measurements:

Entrance width is 1.4m.

The venue 4.5m (width) by 16m (length). Central beam height is 2.8m.

### Seating

There is no seating available at this venue. Please email [info@bfmaf.org](mailto:info@bfmaf.org) or as a volunteer if you require a seat.

### Temperature

The venue is unheated and quite chilly.



## Venue Sensory Access

### Lighting

The venue has dim lighting and relies on the natural light which comes through the door, as well as some dim lighting from the screened work

Flooring: Brown wooden floorboards, fairly smooth, some large nails.

Sound: Mostly quiet, birdsong

Patterns: The white walls and dark wooden beams in a confined space creates a high contrast geometric pattern.



### Toilets

There are no toilets within the venue. There is a non-accessible public toilet 'Superloo' costing 20p per use on Woolmarket around 6 minutes at a leisurely pace from the venue. Further down Ravensdowne or down the Berwick wall footpath at the Barracks are two more BFMAF venues with toilets, the Gymnasium Gallery and Mobhouse. They are both about 8 minutes at a leisurely pace from Magazine or 2 minutes drive. Please refer to the venue documents for further info on their toilets.

### Food/Drink

No food and drink available at this venue



## Emergency Evacuation

Evacuate out of the only entrance, the front entrance door, onto the grass outside.

## Event Description and Access

For further information on the film showing at this venue please visit this webpage: <https://bfmaf.org/programme/stepney-western/>

## Venue Name: The Maltings Theatre and Cinema

**Address: Maltings Berwick, Eastern Lane, Berwick-upon-Tweed TD15 1AJ**

Website: <https://www.maltingsberwick.co.uk/>

Google Maps: <https://maps.app.goo.gl/wGFQozg8ZT7YwF987>

BFMAF Venue Webpage: <https://bfmaf.org/location/maltings-main-house/> + <https://bfmaf.org/location/maltings-henry-travers/>



## Venue Introduction

This is a large venue on 4 floors which includes a theatre and cinema, The Maltings Cafe Bar and the Henry Travers Studio. It's a busy venue with a programme of films and theatre. This venue offers step-free access to all spaces and has a lift.

## Transport and Parking

**Bus:** The nearest bus stop is Bridge Street which has bus; Berwick Hoppa. The journey from the venue to bus stop is 4 minutes at a leisurely pace.

**Train:** The nearest train station is Berwick-upon-Tweed. The journey from the station to the venue is mostly flat and would take 25 minutes at a leisurely pace or a 4 minute drive. Some pavements are very narrow.

**Taxis and Cars:** Maltings has its own car park at the front of the venue accessible via Eastern Lane or Easter Wynd. There are disabled parking spaces close to the venue entrance. You can do short stay drop-offs in the car park close to the venue entrance.



## Entrance

There is ramped access on the left side of the main entrance or 8 wide steps with handrails on both sides. There are either push doors at the main entrance or power assisted doors with a push button on the left side.

This entrance takes you to the foyer of the venue with a box

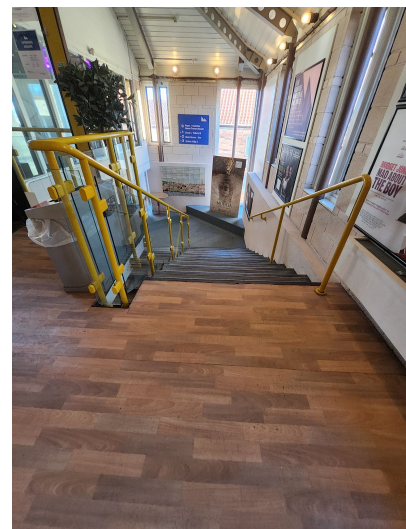


office desk directly in front, the Henry Travers Studio through a door to the left and The Maltings Cafe Bar through a door to the right.

Both the Henry Travers Studio on the ground floor and the Cinema and Theatre on the lower ground floor levels will be used for BFMAF events.

To access the theatre and cinema auditorium you need to either take the lift or the stairs. The lift is yellow and it is to the right as you come in. The stairs are also on the right with a yellow handrail on one side.

You need to take the lift to the lower levels or go down the stairs, more info on these below.



### **Physical Access: Henry Travers Studio**

Room Description: A black square room with red details.

Doorway: Wide double door which is held open before events start.

Seating: Fixed auditorium style pull-out padded seating with padded seat and back and no arms. Loose chairs with padded backs and seats and no arms.

Temperature: Heated and warm, not much ventilation.

### **Sensory Access: Henry Travers Studio**

Lighting: The lighting in this venue will depend on the event. There may be coloured lights. For most events, the curtains will be open.

Flooring: Smooth black flooring

Sound: No ambient sound from outside the room could be heard.

Patterns: Ceiling lighting rig in a grid, high contrast between the red auditorium style seating and black room.

Smell: Neutral

### **Physical Access: Theatre and Cinema**

Steps and Lifts: To access the theatre and cinema you need to get the lift or stairs to the lower ground levels. The lift has a maximum capacity of 630kg and can fit one wheelchair or

mobility scooter at a time. The circle has an accessible seating section which is on the -1 lower ground level. This is accessible via the lift or down 16 stairs. There is more accessible seating options in the stalls which is on the -2 lower ground level. This is accessible via the lift or down 32 stairs and through the stage bar. If you are sitting in a non step-free seat, there are stairs to the seats and they have silver contrast edgings. All stairs outside and inside the auditorium have a handrail.

**Room Description:** A large theatre auditorium with a stage and cinema screen, raked seating, additional seating on a circle mezzanine and in boxes.

**Doorways:** Doorways into the auditorium are 112cm wide.

**Seating:** Fixed auditorium style padded seating with padded seat and back and no arms. Loose chairs with padded backs and seats and no arms, spaces for wheelchairs.

**Temperature:** Heated and warm, not much ventilation.



### **Venue Room Sensory Access: Theatre and Cinema**

**Lighting:** Lighting in the stairways, corridors and theatre bar are from shaded lamps and are generally dim and warm. There are some bright round shaded fluorescent lights on the walls of the corridor on -3 level and in the toilets. In the auditorium it will be softly lit with a large colourful splash screen projected. There will be very low music playing.

**Flooring:** Smooth grey-beige carpets.

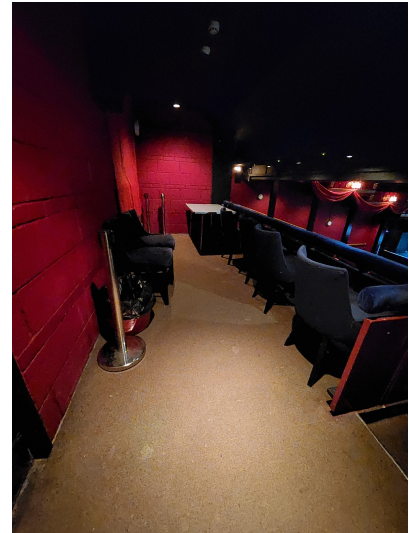
**Sound:** It is a large space and the ambient noise before, after and during breaks from people chatting can be quite loud.

**Patterns:** The walls in the corridors are white or red and are made from a combination of large blocks and small bricks creating a grid-like pattern. There is contrast between the red walls and chairs and the vertical black beams and gold features in the auditorium.

**Smell:** Neutral

**Temperature:** Heated, warm, hot





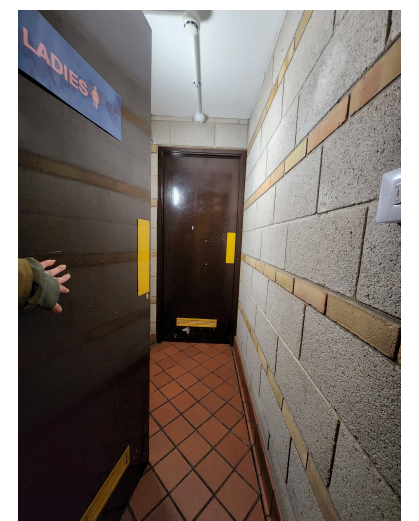
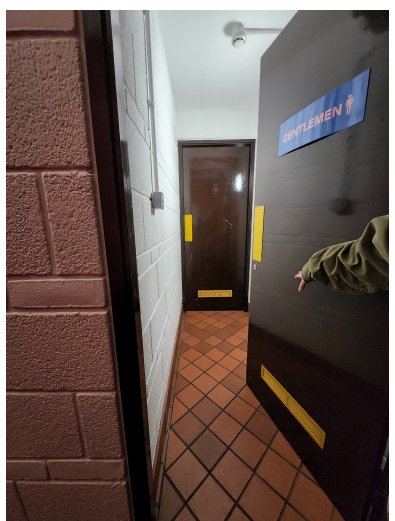
### **Toilets:**

There are gendered toilets on the -1 lower ground level. There is an accessible adapted toilet with babychange facilities and gendered toilets on the -3 lower ground level. All toilets are accessible via the lift or down the stairs with a handrail. The doorways of the toilets are 91cm wide.

### **Toilet Sensory Notes:**

Lighting: Round shaded fluorescent wall lamps.  
Patterns: All the toilets have a brown tiled floor and white tiles on the lower part of the wall creating a square grid pattern. The upper part of the walls have large blocks and small bricks combined to make a grid pattern. The colour scheme of the corridors and toilet are red, white, black and yellow and have high contrast.







## Food/Drink

There is food and drink available at the Cafe Bar on the ground floor. The opening times are;

### 'Opening hours for 2025 :

Tuesday – Saturday 9.30am – 4pm

Lunches served from 11.45am – 2.45pm

Drinks and home baking served until 3.45pm

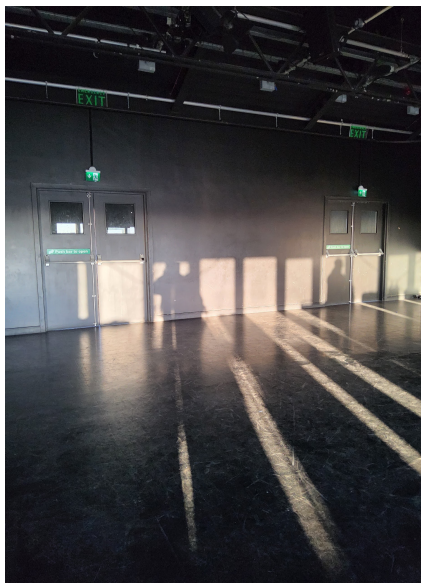
Sundays/Mondays – CLOSED

There will be a bar service available one hour before every show/film.'

There are also drinks available at the Theatre Bar on the -1 lower ground floor level before and during events.

## Emergency Evacuation

There are multiple emergency exits throughout the building, including step-free emergency exits, marked by illuminated green signs which will take you either to the outside of the building or external refuge points. Follow the signs and the directions by staff in the case of an emergency. The closest step-free emergency exit in the theatre is back through to the theatre bar and through a corridor exit marked with a green emergency exit sign. The closest step-free emergency exit in the Henry Travers Studio is through the marked emergency exits within the studio into a glass corridor which leads out to the carpark. The emergency meeting point is across the road outside the Sports Direct.



## Event Description and Access

Multiple film, workshop and conversational events will be showing at this venue. For further information please visit the venue webpages and navigate to the event you wish to attend to find out more: <https://bfmaf.org/location/maltings-main-house/> + <https://bfmaf.org/location/maltings-henry-travers/>

**Venue Name: Magdalene Fields Golf Club**

**Address: Magdalene Fields Golf Club, Berwick-upon-Tweed TD15 1NE**

Website: <https://magdalene-fields.co.uk/>

Google Maps: <https://maps.app.goo.gl/KZb6Tajuf1JQXueP9>

BFMAF Venue webpage: <https://bfmaf.org/location/magdalene-fields-golf-club/>



### **Venue Introduction**

Magdalene Fields Golf Club is a coastal golf club in Berwick-upon-Tweed. It is a single level venue. It is next to a Haven Holidays caravan park and the coastal cliff and beach. It has a golf course and an indoor bar and restaurant. It has step-free access but no accessible adapted toilet. It is next to a Haven Holidays Static Caravan Park and a path down to the beach.



### **Transport and Parking**

The golf club is accessed via Loverose Way, a narrow road which loops from Parade to Northumberland Avenue. It is 10 minutes from Parade to the venue at a leisurely pace or a 1 minute drive. It is 15 minutes from Northumberland Avenue to the venue at a leisurely pace or a 2 minute drive. The road has no pavement and is uneven in parts. There is a stone archway at the intersection with cobblestones that are very uneven. This venue is all on one level and is step free. It has no disabled toilet.

**Bus:** The nearest bus stop is Holiday Centre on Northumberland Avenue which has bus; Berwick Hoppa. The journey from the venue to bus stop is 12 minutes at a leisurely pace.

**Train:** The nearest train station is Berwick-upon-Tweed. The journey from the station to the venue is mostly flat and would take 25-30 minutes at a leisurely pace or a 3 minute drive. Some pavements are very narrow.

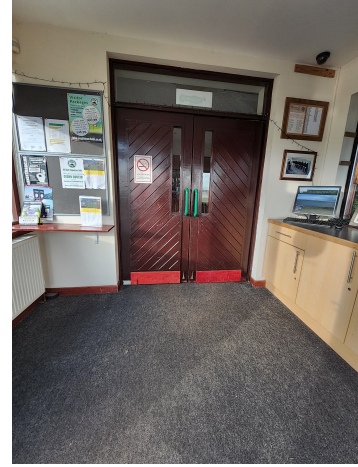
### **Taxis and Cars**

The venue has a car park directly outside which can be used for short stay drop-offs or longer stays.



## Entrance

The entrance to the venue is through a non-automated double door up a stone ramp. The ramp is 112cm wide. This takes you into a porch and the venue room is accessed through a second set of non-automated double doors.



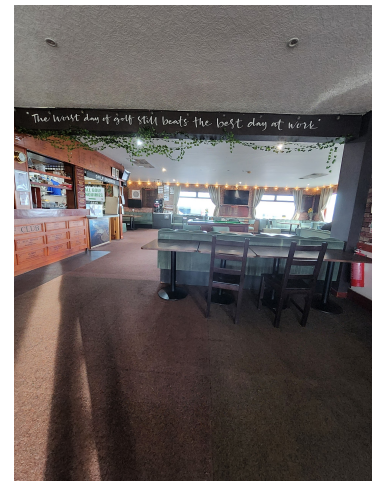
## Venue Physical Access

**Room Description:** The room is an open plan ground floor pub and cafe with a bar. It has booth seating and dining chairs and tables. The colour scheme is quite natural with a lot of wood. There will be a dance floor, DJ table and a projection screen.

**Doorways:** All single doorways, including emergency exits, are 80cm wide. The main entrance double doors are not automated and can be held open.

**Seating:** Booth seating with padded seats and back and no arms. Dining chairs and tables, some chairs have padded seats and backs and no arms and some are wooden hard chairs with no padding and no arms.

**Temperature:** Heated and warm.





### **Venue Sensory Access:**

**Lighting:** Warm glow fairy lights around the edge of the room, a lot of natural light from windows during the day. In the evening there will be strobe lighting during club events. In the hallways and toilets there are ceiling and wall round shaded fluorescent lights.

**Flooring:** Brown carpet tiles with a dark wooden dance floor, both are smooth.

**Sound:** Ambient noise from the bar, kitchen and other people attending the venue. The music will be loud during DJ sets. The sound is well insulated and outside will be quiet.

**Patterns:** Faux red brick wallpaper on the walls, faux wood wallpaper on the front of the bar and faux dry stone wall wallpaper on the front of the buffet bar.

**Smell:** Smells of food and cooking from the kitchen.



### **Toilets**

There are no accessible adapted toilets. There are two gendered toilets and there is one cubical in the 'Ladies' toilet that has two grab bars. It is not a widened cubicle and there are no lowered features. The doorways to the cubicles are all 66cm wide and the cubicle is 85cm wide inside. The babychange facilities are also in the toilet marked 'Ladies'.





## Food and Drink

Food and drink will be available at this venue. During club events, alcoholic and soft drinks will be available. Snack food will also be available.



## Emergency Evacuation

There are three emergency evacuation exits that are marked with green signs. The step-free evacuation door is the main entrance double doors and down the stone ramp. There are two other evacuation exits that have two small stone steps down to the ground level. One is next to the bar and buffet bar and one is in the toilet corridor. The evacuation meeting point is in the car park outside.



## Event Description and Access

Loud music and flashing/strobe lighting. There will be two club nights and one karaoke night at this venue. For further information please visit this webpage: [https://bfmaf.org/?bfmaf\\_programme\\_line=13343](https://bfmaf.org/?bfmaf_programme_line=13343)

**Venue Name: The Gymnasium Gallery**

**Address: Berwick Gymnasium Arts Fellowship, The Barracks, 18 Parade, Berwick-upon-Tweed TD15 1DF**

Website: <https://englandscoast.com/en/listing/the-gymnasium-gallery>

Google Maps: <https://maps.app.goo.gl/jRUzrKRLJcFMjSEx9>

BFMAF Venue webpage: <https://bfmaf.org/location/the-gymnasium/>



**Venue Introduction**

A large open-plan gallery space within the heritage building, the Berwick-upon-Tweed Barracks. This gallery hosts exhibitions and local creative projects. This venue is step-free and it has an accessible toilet in an outhouse building within the Barracks.

**Transport and Parking**

**Bus:** The nearest bus stop is Chapel Street which has buses; Berwick Hoppa and 235. The journey from the venue to bus stop is 7 minutes at a leisurely pace.

**Train:** The nearest train station is Berwick-upon-Tweed. The journey from the station to the venue is mostly flat and would take 25-30 minutes at a leisurely pace or a 4 minute drive. Some pavements are very narrow.

**Taxis and Cars**

The Barracks has a short gate driveway outside on Parade which can be used for short drop-offs and pick-ups. Parade Carpark is close by and can be used for longer stays. There is limited on-street parking close by. T



**Entrance**

The entrance door is accessed only via the footpath through a non-automated gate on Parade. Once through the gate, the venue is on the right, via the footpath and up an incline. The

venue is through the double doors.

**Venue Physical Access**

**Room Description:** A large open-plan gallery with white walls, a tall white ceiling, white ceiling beams and dark wooden floor. There will be a big screen on the far end of the room and it will be dark.

**Doorways:**





There are two doorways, the main entrance and a side doorway to the courtyard where the outhouse toilet are. Both are step-free wide double doors. All doors in this venue are non-automated.

Seating: Hard benches

Temperature: Unheated and quite cold.

### Toilets

There are two gendered toilets and one accessible toilet in the courtyard in an outhouse building, accessible through the venue's side double doors. The accessible toilet is a widened toilet with grab bars and lowered features and a non-automated door with push bar inside.



### Venue Sensory Access

Lighting: Dark with most light coming from the open door and projection.

Flooring: Dark wooden floorboards with some white and yellow painted gym hall lines.

Sound: Ambient echoey sound.

Patterns: The wooden floorboards with contrasting painted gym hall lines. The ceiling structure, beams and light rig create a criss cross of geometric patterns although with little contrast as they are mostly white and silver. Outside in the courtyard the floor stones create a grid pattern.

Smell: Woody musty old buildings scent



### Food/Drink

There is no food and drink available at this venue.



## Emergency Evacuation

Emergency Evacuation is out of either of the double doors at the main entrance or side entrance to the grass outside. Both are step-free.

## Event Description and Access

Flashing lights/strobe effects and loud noises. For further information about the film showing at this venue please visit this webpage: <https://bfmaf.org/programme/black-glass/>

## Venue Name: The Peace Church

**Address:** 46 Church Street, Berwick-upon-Tweed, TD15 1DX

**Website:** no website

**Google Maps:** <https://maps.app.goo.gl/tVUFbLT4M3yN9s6p6>

**BFMAF Venue webpage:** <https://bfmaf.org/location/st-aidans-peace-church/>



## Venue Introduction

The Peace Church is a tucked away venue, it is an open plan community hall used by various local groups. This venue is not step-free, there are some shallow lip-steps and no ramp. There are also some narrow parts of the building to navigate.

## Transport and Parking

**Bus:** The nearest bus stop is Chapel Street which has buses; 235 and 32. The journey from the venue to bus stop is 5 minutes at a leisurely pace.

**Train:** The nearest train station is Berwick-upon-Tweed. The journey from the station to the venue is mostly flat and would take 20 minutes at a leisurely pace or a 3 minute drive. Some pavements are very narrow.



## Taxis and Cars

There is limited on street parking on Church Street. Parade Carpark is close by and can be used for longer stays.

## Entrance

This venue is quite tucked away and not visible from the street. It can be accessed via a pedestrianised lane through an archway in-between the King's Head Inn pub and the police station. It does have a small faded white hanging sign visible from the street. The pedestrianised lane through the archway is first cobbled and then flat and concrete, all of the flooring outside is a bit uneven. The time from the road archway entrance to the entrance of the building is 1-2 minutes at a leisurely pace.

The pathway leads to a courtyard and the entrance is

through the white wooden double doors on the right. This entrance is not step-free and has 2 shallow stone steps to get inside. Once inside the entranceway, the venue room is through the door to the left. The entranceway is quite narrow, 80cm at the narrowest point.



## **Venue Physical Access**

### **Room Description**

A square hall with high ceilings, a mezzanine floor and colourful large stained glass windows. The walls are mostly white with some dark grey, black and deep red painted sections. The mezzanine floor is not used. There will be a projection screen in front of the windows.

**Doorways:** The entrance double doors are 114cm wide. The single doorway from the entranceway into the main venue hall is 87cm wide. All doors in this venue are non-automated.

**Seating:** There are plastic and wooden chairs with backs and no arms. Some of the wooden chairs have padded seats. All of the chairs have hard backs, none are padded.

**Toilets:** The toilets were under construction and we weren't able to enter them. There are two and they are down a short corridor that is 95cm wide. The nearest toilet facilities can be found at the Maltings Cinema at the Barracks or The Town Hall.

**Temperature:** There are radiators but the venue is quite cold.

### **Venue Sensory Access**

**Lighting:** There are hanging pendants and some strip fluorescent lights as well as natural lights from the windows. Lighting from projection will be the main source of light, with some natural light through the windows.

**Flooring:** Old wooden floorboards, various shades of brown in different sections, some slightly uneven but smooth.

**Sound:** Echoey ambient sound from the building, some

ambient sound from outside such as birdsong.

**Patterns:** Generally a neutral colourschemed space. There is a black crisscross pattern over the stained windows. The mezzanine edge has large gold flowers repeated and a red top rim on a cream background.

**Smell:** Old building scent, woody mixed with the scent of fresh construction.

**Food and Drink:** There is no food and drink available at this venue. There are several cafes nearby.

## **Emergency Evacuation**





The only entrance and exit is through the main entrance double doors via the entranceway. The evacuation meeting point is down the pedestrianised path, through the archway and back onto the street.

### **Event Description and Access**

Blood/gore. For further information about the film showing at this venue please visit this webpage: <https://bfmaf.org/programme/some-strings/>.

### **Venue Name: 22 Bridge Street**

**Address:** 22 Bridge Street, Berwick-upon-Tweed, TD15 1AQ

**Website:** No Website

**Google Maps:** <https://maps.app.goo.gl/mH9Ma4BU869zUHGy6>

**BFMAF Venue webpage:** <https://bfmaf.org/location/22-bridge-street/>

### **Venue Introduction**

The inside is a ground floor venue with two levels. There is no step-free entrance, the side entrance has a small shallow step with a metal doorway lip. The venue has some narrow parts to navigate. The venue has no accessible toilet.

### **Transport and Parking**

**Bus:** The nearest bus stop is Bridge Street which has the bus; Berwick Hoppa. The journey from the venue to bus stop is 2 minutes at a leisurely pace.

**Train:** The nearest train station is Berwick-upon-Tweed. The journey from the station to the venue is mostly flat and would take 20 minutes at a leisurely pace or a 4 minute drive. Some pavements are very narrow.

**Taxis and Cars:** There is no on street parking. There is a small carpark across the road from the venue called Bridge Street Carpark. This can be used for drop-offs and pick-ups or longer stays up to 2 hours free of charge.

### **Entrance**

There are two entrances into this venue. The shopfront entrance is up two steps. The steps have dark grey tiles with silver contrast edgings. The second entrance is not step-free but offers an option with shallower steps and doorway lips. It is through the dark brown wooden door next to the shopfront door, it's marked 22B. It leads to an alleyway 100cm wide, the flooring is concrete and smooth. The side entrance of the venue is through the first door on the right. Please ask a member at the front door if you require use of this access as it will be closed. The side entrance takes you into the kitchen which requires turning a corner in a confined space, 75cm at the most narrow point, to access the main venue room through a doorway with silver chainlink metal curtains either side of the door.

## **Venue Physical Access**

### **Room Description:**

An empty shop on two levels with one step between them. The step has a silver contrasting edging. The colourscheme is white and dark blue with light brown varnished wooden floorboards. There is an adjoining small room with a kitchen and single non-accessible toilet.

**Doorways:** The shopfront doorway is 73cm wide. The side entrance doorway is 80cm wide. The doorway between the main room and the small room with a kitchen and toilet is 73cm wide. All doors are single non-automated doors.

**Seating:** 2 bench seats, some stools and metal chairs.

**Toilets:** There is a single toilet in the smaller room in the venue. It has a folding non-automated door that is 61cm wide. The toilet cubicle is small, 62cm wide at the narrowest point from the sink to the wall. It has no accessible features. There are no babychanging facilities.

**Temperature:** Warm

## **Venue Sensory Access**

**Lighting:** Hanging ceiling lights in main room. Fluorescent white light in toilet. Yellow-warm fluorescent light in the kitchen. Natural light from the shopfront window.

**Flooring:** Varnished light brown smooth floorboards in the main room. Dark grey lino in the kitchen, bubbled up in some areas.

**Sound:** Some ambient sound from the street like cars and people passing.

**Patterns:** Cream window grid on the shopfront window. Faux tricolour brick wallpaper in the kitchen. Light brown wooden horizontal panelling in the toilet. Large white, dark grey and light grey patterned splashback tiles in the toilet. Silver chainlink curtain in the doorway from, the main room to the smaller room.

**Smell:** Neutral

## **Food and Drink**

There is no food and drink available at this venue. There are several cafes and restaurants close by.

## **Emergency Evacuation**

The emergency exits are through the two entrances, either the shopfront entrance or the side entrance through the kitchen. The emergency meeting point is outside on the pavement across the street.

### **Event Description and Access**

Mental health issues, mild sexual references. For further information about the film showing at this venue please visit this webpage: <https://bfmaf.org/programme/endless-love-tapes/>.

### **Venue Name: Maltings Cinema at the Barracks**

**Address:** Maltings Cinema at Berwick Barracks, Parade, Berwick-upon-Tweed TD15 1DF

**Website:** <https://www.maltingsberwick.co.uk/about-us/our-venues/>

**Google Maps:** <https://maps.app.goo.gl/sGJyQz4ZaGF4JzV86>

**BFMAF Venue webpage:** <https://bfmaf.org/location/maltings-cinema-at-the-barracks/>

### **Venue Introduction**

This venue is within the Berwick Barracks buildings. It has recently been under renovation and is set to officially open in the Summer of this year. It is opening occasionally for events until then. It is a bit tucked away and not visible from the street. There is a helpful video at the bottom of the webpage via the link above that describes how to find it. The venue is a cinema inside a heritage building.

### **Transport and Parking**

**Bus:** The nearest bus stop is Chapel Street which has buses; Berwick Hoppa, 235 and 32. The journey from the venue to bus stop is 8 minutes at a leisurely pace.

**Train:** The nearest train station is Berwick-upon-Tweed. The journey from the station to the venue is mostly flat and would take 25-30 minutes at a leisurely pace or a 4 minute drive. Some pavements are very narrow.

**Taxis and Cars:** The Barracks has a short gate driveway outside on Parade which can be used for short drop-offs and pick-ups. Parade Carpark is close by and can be used for longer stays. There is limited on-street parking close by. Disabled parking spaces are accessed by the entrance on Ravensdowne.

- Maltings Cinema at Berwick Barracks is all on one level and has baby changing facilities.
- There is Disabled parking available at Parade Car Park.
- Maltings Cinema at Berwick Barracks welcomes guide dogs.

### **Useful Contacts**

#### **Mobility Aid Rental**

#### **North East Mobility Solutions**

Mobility scooter hire, powerchair rental and wheelchair hire in Berwick-upon-Tweed, throughout North Northumberland, the Scottish Borders and Edinburgh.

Telephone: 01289 331055

**Email:** [customercare@nemobility.co.uk](mailto:customercare@nemobility.co.uk)

## Taxis

If you anticipate needing to use a taxi service at any point during your stay, we strongly recommend booking in advance.

## 1st Cab

01289 545007

<http://www.1stcabberwick.co.uk>

## A1 Cabs

01289 308524

[enquiries@a1cabsberwick.co.uk](mailto:enquiries@a1cabsberwick.co.uk)

<http://www.a1cabsberwick.co.uk>

## Basher's Cabs

07401 304764

<http://basherscabs.co.uk>

## West End Cabs

01289 303050

[info@westendcabs.co.uk](mailto:info@westendcabs.co.uk)

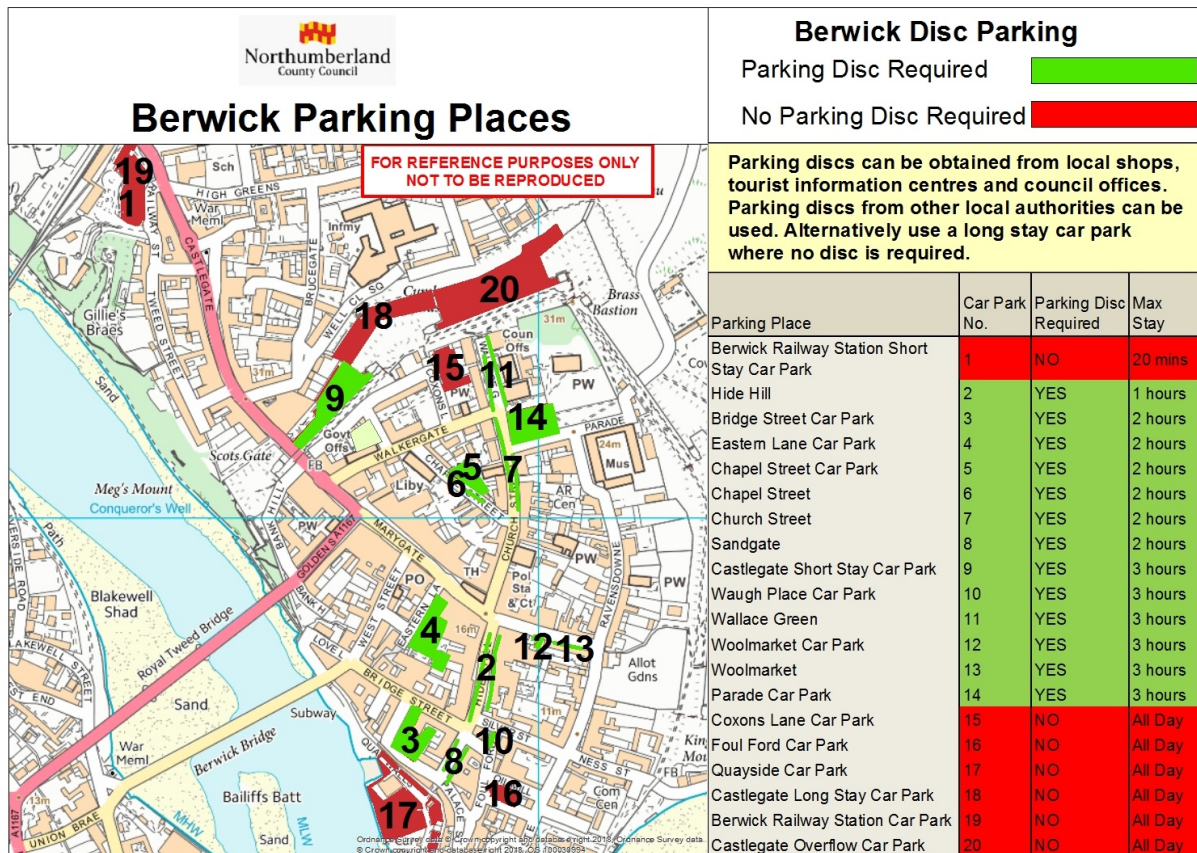
<http://www.westendcabs.co.uk>

## Woody's Taxis

01289 547009

[info@berwickupontweedtaxi.co.uk](mailto:info@berwickupontweedtaxi.co.uk)

<http://berwickupontweedtaxi.co.uk>





**Carparks:** <https://www.visitberwick.com/what-to-do/find-a-car-park/>

**Parade Carpark includes electric vehicle charging station**

**Above map available to download here:** [https://www.northumberland.gov.uk/](https://www.northumberland.gov.uk/NorthumberlandCountyCouncil/media/Parking-documents/Berwick-Town-Centre-Plan.jpg)

[NorthumberlandCountyCouncil/media/Parking-documents/Berwick-Town-Centre-Plan.jpg](https://www.northumberland.gov.uk/NorthumberlandCountyCouncil/media/Parking-documents/Berwick-Town-Centre-Plan.jpg)

**List of Public Toilets on the Town Map available on this webpage:** <https://bfmaf.org/visit-access/>

**Northumberland County Council Public Toilets in Berwick-upon-Tweed:**

- Castlegate Car Park, TD15 1JS. Accessible, RADAR Key required, 20p honesty box, babychanging facilities are located in the Female toilet
- Eastern Lane superloo, TD15 1AT. Fee 20p.
- Magdalene Fields Golf Club, TD15 1NE. Accessible, RADAR Key required
- The Promenade Spittle, TD15 1RN. Accessible, RADAR Key required, and babychanging facilities are located in the Female toilet
- Woolmarket, TD15 1DH

**Local Saunas and Spa Treatments:** <https://www.placesleisure.org/centres/berwick-sports-and-leisure-centre/>