

# Berwick Film and Media Arts Festival

## Accessibility Document for Visitors

**Main contact at BFMAF for accessibility enquiries:** Ben Lewis

**Telephone:** +44 1289 303355 (Please leave a voicemail if there is no response, will respond within a week)

**Email:** ben@bfmaf.org (4 days a week, will respond within a day)

## Accessibility Document Introduction Statement

This accessibility document was created by artist and accessibility consultant, Laura Lulika, in January 2025.

*Berwick Film and Media Arts Festival is a festival which takes place annually across several venues in Berwick-upon-Tweed. Many of the venues are historical buildings that have not been built with accessibility in mind. I hope this clear and thorough document will allow visitors to make informed choices and plan their visits more easily. As with all of my documents, I approach accessibility from a holistic and intersectional framework, therefore it includes physical and sensory accessibility information, helpful information for those attending the festival with children and general information about the town. Learning, action and evolving are key to improving accessibility and this document is just a starting point to offering better accessibility at Berwick Film and Media Arts Festival and to gain an understanding of how to improve accessibility in the future.*

*All venues were attended in-person apart from the inside of Mob and the inside of Magazine, however we were able to see the external in-person and photos of the inside. The toilets of The Peace Church were under construction during this audit.*

*All of my accessibility documents are open to feedback for further development. Please feel welcome to contact me if you would like to give feedback about this document:  
yonabout@outlook.com*

## Berwick-upon-Tweed Introduction

Berwick-upon-Tweed is a historical town in Northumberland. It is the Northern most town in England and it is 2.5 miles from the Anglo-Scottish border. It has a population of about 12000 people.

Berwick is well known for its medieval town walls, Britain's oldest Barracks buildings and for having a beautiful coastline. It attracts tourists who come for the history and nature.

Berwick has one train station, Berwick-upon-Tweed Railway Station, and many people use cars, taxis or the local bus service to get around. See Useful Contacts for local taxi rank phone numbers. When using the pavements in Berwick, be aware that many are narrow and the surface varies from cobblestones, pavers and concrete. There are pavement drop curbs and tactile paving at crossings in the town centre.

Berwick doesn't have a big chain supermarket in the town centre, instead there are some small chain shops and some independent grocery shops. There are some large chain supermarkets, Morrisons and Aldi are up the A1167 in Loaning Meadows. Across the river in Tweedmouth, there is a large Asda and Tesco.

## About Berwick Film and Media Arts Festival

Berwick Film & Media Arts Festival (BFMAF) is an artistically ambitious organisation for new cinema and artists' moving image based in North Northumberland on the English border with Scotland.

A work in progress, leading through collaboration, it has a resolute commitment to the mutual development of the artists, audiences, filmmakers and programmers that make the festival possible.

The Festival enacts pluralist ideas of contemporary cinema, its history and curation. Short, medium or feature-length Festival selections can include arthouse, documentary or genre cinema; artists' moving image and sound; world premieres and freshly restored archival titles; or live, installation-based or performative works of cinema. Together, they hold shared and overlapping interests in asking what new cinema might be.

BFMAF also strives to understand and work towards optimal exhibition conditions for artists and filmmakers' work within the resources and contexts it has available. In evaluating this, the accessibility of audiences and communities that it is involved with – locally, regionally, nationally and internationally are of utmost consideration.

We are striving to make the festival accessible for all audiences and will continue to update the tools and information we have available in the lead up to the festival.

Please do contact us directly at [info@bfmaf.org](mailto:info@bfmaf.org) if you have any individual access requirements and we will do our best to assist.

Please visit this webpage for further information: <https://bfmaf.org/visit-access/accessibility/>

## Staff

Staff will be present at all venues during the festival. They can be identified by their blue lanyards with the Berwick Film and Media Arts Festival logos on, or by a BFMAf sticker on their clothes. Team member lanyards will state "Staff" on them. If you need help or support while attending the festival please speak to one of our staff or volunteers. Our staff have undertaken Deaf Awareness training and key team members have undertaken Safeguarding and Health and Safety training.

## Venues

All venues are marked on an interactive Google map available here: <https://bfmaf.org/visit-access>

Print versions of the Town Map will be available at the Info Desk, located at the Maltings Cinema.

The festival runs from Friday 20 March - Sunday 22 March 2025.

The opening times of the venues during the festival are:

- The Barracks Cinema at the Maltings: 11am - 10pm, Friday - Sunday
- The Town Hall Council Chamber Relaxed Screen: 11am - 10pm
- The Town Hall Guild Hall Social Hub: 10am - 4pm (with dinners served at 6pm Friday and Saturday)
- 22 Bridge St: 09am - 4.30pm
- Magdalene Golf Fields: Parties on Friday 09.30pm-12.30am, Saturday 9.30-11.30pm, Sunday 9.30-11.30pm

All Festival venues will have A-Boards, Festival banners or Festival posters outside.

If you cannot access any of the venues, please speak to a member of staff or email [info@bfmaf.org](mailto:info@bfmaf.org) and we can provide you with access to the film online.

Guide dogs and assistance dogs are welcome in all venues.

## Pre-booking

If you have any access requirements, please email at [info@bfmaf.org](mailto:info@bfmaf.org) with details of the screening you will be attending and we will make the necessary arrangements.

If you are d/Deaf and would prefer front-row seats so that you have clear sight lines for Subtitles at the Maltings' Cinema at the Barracks please ask the box office.

## Quiet Spaces

Festivals can be overwhelming and overstimulating.

Berwick is generally a quiet town and has many pockets of quiet nature and green space.

If you are feeling overwhelmed or unwell and need to access a quiet space inside a festival venue please speak to a staff member or volunteer and they will support you. If you need a quiet space and you're able to safely leave the venue, all the venues have quiet spaces immediately outside of them and a staff member or volunteer can support you in finding somewhere more comfortable outside.

A quiet space is available upstairs at the Berwick Youth Hostel Association. For further details please visit: <https://bfmaf.org/visit-access/accessibility/>

The YHA has steps and a lift to the 1st floor.

## Covid19 and Virus Prevention

If you require a face mask, hand sanitiser or assurance of ventilation in any of our venues, please speak to a member of staff at the Info Desk at the entrance to the Maltings Cinema.

## Anti-Racism

The racial diversity of Berwick upon Tweed is 97.8% white which is a higher percentage than the average percentage of white people across the UK. If you feel uncomfortable, please speak to a member of staff. If you would like to request a buddy while you are travelling around town, please speak to a member of staff or email [info@bfmaf.org](mailto:info@bfmaf.org).

## Financial Barriers

We would love to have you attend the Festival and hope the following options may make visiting more financially viable for anyone who would like to attend. You can request a

discount code if you are facing financial barriers, please email [info@bfmaf.org](mailto:info@bfmaf.org) to get further guidance on receiving a discount code for screenings in The Maltings Main House. For early-career filmmakers and artists, we have a limited number of free Festival passes and can advise on the cheapest accommodation options. These passes are reserved for unwaged or low waged guests who would otherwise not be able to attend. Contact us directly at [info@bfmaf.org](mailto:info@bfmaf.org) for more information.

## Subtitles, SDH and Audio Descriptions

This year, we are aiming to have Descriptive Subtitles (SDH /captions) available for all dialogue across the programme. Any exceptions will be clearly listed on the website. Details for the subtitles available for each film are listed on the programme page for every viewing. Please check the website listings for further details. We unfortunately cannot offer Audio Description for screenings at this iteration of the Festival.

Content notes are listed where appropriate for each film listing and can be found in our Programme Catalog. Additionally, you can email us about any concerns at [info@bfmaf.org](mailto:info@bfmaf.org), or ask a member of staff or volunteer on site at the Festival for further information.

## Large Print and Text Only Guides

**Large print** and **text only versions** of our Catalogue and User Guide will be available from our website. Pick up physical copies at our welcome desk at The Maltings during the festival.

## Carers

Carers accompanying audience members receive free tickets to screenings. Please enquire at The Maltings' Box Office if buying tickets on-the-day or email [info@bfmaf.org](mailto:info@bfmaf.org) for further guidance.

# Venues

**Physical and sensory accessibility information and travel information for all venues used during the festival.**

## Venue Name: Maltings Cinema at the Barracks

**Address:** Maltings Cinema at Berwick Barracks, Parade, Berwick-upon-Tweed TD15 1DF

**Website:** <https://www.maltingsberwick.co.uk/about-us/our-venues/>

**Google Maps:** <https://maps.app.goo.gl/sGJyQz4ZaGF4JzV86>

**BFMAF Venue webpage:** <https://bfmaf.org/location/maltings-cinema-at-the-barracks/>



### Venue Introduction

This venue is within the Berwick Barracks buildings. It has recently been under renovation and is set to officially open in the Summer of this year. It is opening occasionally for events until then. It is a bit tucked away and not visible from the street. There is a helpful video at the bottom of the webpage via the link above that describes how to find it. The venue is a cinema inside a heritage building.

### Transport and Parking

**Bus:** The nearest bus stop is Chapel Street which has buses; Berwick Hoppa, 235 and 32. The journey from the venue to bus stop is 8 minutes at a leisurely pace.

**Train:** The nearest train station is Berwick-upon-Tweed. The journey from the station to the venue is mostly flat and would take 25-30 minutes at a leisurely pace or a 4 minute drive. Some pavements are very narrow.

**Taxis and Cars:** The Barracks has a short gate driveway outside on Parade which can be used for short drop-offs and pick-ups. Parade Carpark is close by and can be used for longer stays. There is limited on-street parking close by. Disabled parking spaces are

accessed by the entrance on Ravensdowne. There is Disabled parking available at Parade Car Park.

### **Venue Access Information**

Unfortunately we are still reviewing detailed access information for this venue. If you have any specific questions, please email [access@bfmaf.org](mailto:access@bfmaf.org).

The Maltings' Cinema at Berwick Barracks is all on one level and includes baby changing facilities. There are 4 wheelchair spaces available on the front row of the cinema. There is raked seating, and 96 seats in total. Guide dogs are warmly welcomed at this venue.

## Venue Name: The Town Hall Chambers

Address: 16 Marygate, Berwick-upon-Tweed TD15 1BN

Website: <https://berwicktownhall.org.uk/>

Access page:

<https://berwicktownhall.org.uk/access-to-the-town-hall/>

Google Maps: <https://maps.app.goo.gl/KrWe5Jpk6841KuoX6>

### Venue Introduction

Berwick Town Hall is a Grade I Listed building in the town centre of Berwick-upon-Tweed. It is a large historical stone building with a clock tower and a cafe. The Town Hall serves as a civic meeting place, wedding and event venue, and consists of three floor levels. This venue is not step-free and has two stair-climbers. This venue has an adapted toilet.



### Transport and Parking

**Bus:** The nearest bus stop is Golden Square which has buses; 60, 67, 266, 267, 464, 477, B1, Berwick Hoppa, X15, X18. The journey from the venue to bus stop is 5 minutes at a leisurely pace.

**Train:** The nearest train station is Berwick-upon-Tweed. The journey from the station to the venue is mostly flat and would take 15 minutes at a leisurely pace or a 3 minute drive. Some pavements are very narrow.

**Taxis and Cars:** Some cars may park for a short stay in the pedestrianised side entrance during deliveries or for taxi drop-offs and pick-up at request. The other side and the back of the building are not pedestrianised and could also be used for taxi drop-off and pick ups.



### Entrance

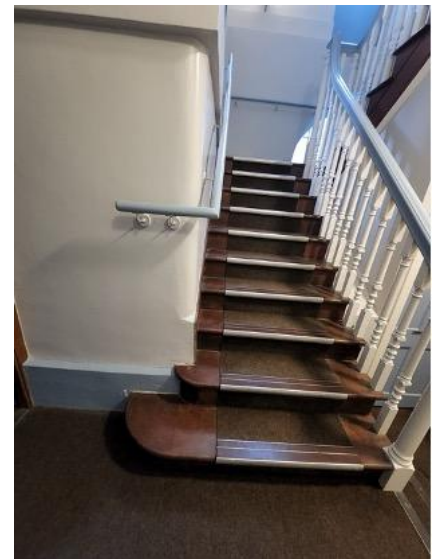
There are two entrances into the venue. The side entrance is on the ground floor on a pedestrianised street. The front entrance is on the first floor up a large set of stone steps. This entrance is also pedestrianised outside. The pedestrianised flooring outside is large square paving stones with some small sections of cobblestones.

The side entrance is for those arriving by foot and ambulatory mobility aid users. The entrance is through non-automated



double doors which will be held open. There are two shallow stone steps into the building with no ramp and no handrail. The venue is on the first floor up 22 steps with a landing halfway and handrails both sides. There is no lift, there are two stair-climbers.

If you are a wheelchair or mobility scooter user and need support to get up the stairs, you will need to ring the intercom bell on the right of the side entrance double doors. Ambulatory mobility aid users that cannot walk up the steps and can transfer from their chair or scooter, will need to use the stair-climber with the support of Town Hall staff to get up the side entrance stairs. The maximum weight for this stair-climber is 130kg.



If you are a wheelchair user that needs to stay in your chair you will need to use the intercom bell at the side entrance to contact the Town Hall staff and then go around to the front of the building to the front entrance. They will meet you there with a stair-climber for non-ambulatory wheelchair users which can be used to get up the 17 steps to the front entrance door with the support of Town Hall staff. The maximum weight for this stair-climber is 200kg.

If you accessed the venue through the side entrance, the stairs will take you to a corridor landing on the first floor, you



need to take a left and then through the first door on the right. All of the single internal doorways are 81cm wide. The doors are not automated but are held open. The doorway will take you to a central room with a blue carpet floor, the venue room is on the left up two shallow carpeted stairs with no ramp.

If you accessed the building through the front entrance, you will be led through a large hall with a wooden floor to the venue room.

There is nowhere to store or park wheelchairs or mobility scooters at the venue.

### **Venue Room Physical Access**

**Room Description:** A medium sized meeting room with front facing rows of armchairs facing one projection screen.

**Doorways:** Doors are not automated but are held open. The width of the venue room doorway is 125cm. The internal single doorways into hallways and toilets are all 81cm wide.

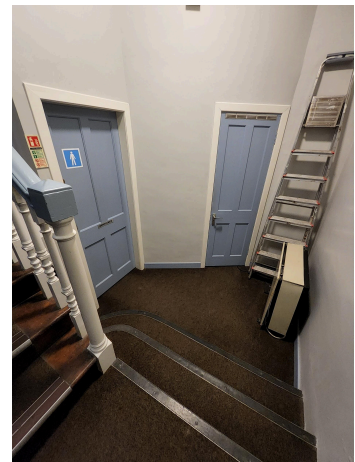
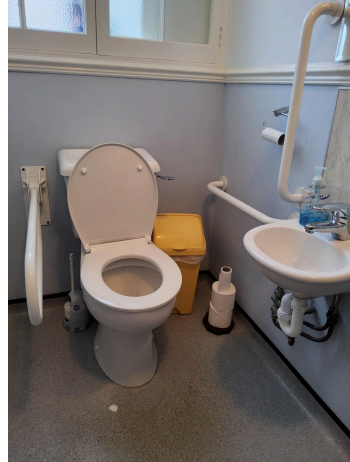
**Steps:** This venue has a lot of steps and no ramp in use. For the two large sets of steps at the entrances there are two stair-climbers, an ambulatory and non-ambulatory option. For the two shallow steps at the side entrance and the two shallow carpeted steps into the screening room there is no ramp, venue staff have suggested supporting wheelchair users over these steps if required.



**Seating:** There are two types of seating in the room; Padded arm chairs with padded backs and hard wooden arms and a bench along the back of the room with a padded seat and a hard wooden back. Armchairs are removable and space will be made for wheelchair users.

**Toilets:** The toilets are gendered. The gendered 'Women's' toilet is on the first floor landing at the top of the stairs. The gendered 'Mens' toilet is on the ground floor landing at the bottom of the stairs. It is down 3 stairs with no ramp. The doors are not automated. The accessible toilet is also the gendered 'Women's' toilet on the first floor landing at the top of the stairs. It has grab bars and a lowered sink. It has no emergency pull cord. The

measurements of the toilet are room width 105cm, at the narrowest point from sink to wall 86cm.



Flooring: The side entrance porch on the ground floor has brown carpet. The front entrance porch on the first floor has square flagstones that are slightly uneven. The inside stairs are carpeted with stair nosings. The carpet is brown with black and silver nosings which provide some contrast. The landings have bright red carpet. The central room on the first floor has blue carpet. The screening room has bright red carpet. The large hall has a light brown varnished wood flooring. The toilets have grey square lino tiles with white speckles. All apart from the flagstones are smooth, flat and even.

Temperature: Entrances and stairways are cool, the rooms are slightly warmer.

### Venue Sensory Access

Lighting: Warm lighting, chandelier style ceiling lights in rooms and warm uplit lamps in stairway, natural lighting from windows. There is a fluorescent light above the front entrance door inside the porch. There is fluorescent and natural lighting from the window in the toilets.

Patterns: Mostly muted colours with some reds and blues. No noticeable high contrast geometric patterns. All rooms on the first floor have patterned wallpaper in a neutral colour scheme.

Smell: Old building smell, no noticeable strong odours.

Food/Drink: There is a cafe through a separate entrance on the ground floor called The Town Hall Cafe open Mon-Sat 10am-2.30pm, closed Sunday. They offer hot and cold drinks, snacks, cakes and meals. The Town hall is also on the high street and is surrounded by other cafe and restaurant options.



Emergency Evacuation: Emergency exits are marked and staff will assist you to the nearest exit which is through the entrance room, hall and front entrance or down the stairs to the side entrance. There is one Evac chair and a trained member of staff will be present.

**Event Description and Access:**

For further information on the film showing at this venue please visit this webpage:

<https://bfmaf.org/programme/relaxed-screenings/>

## Venue Name: Magdalene Fields Golf Club

**Address:** Magdalene Fields Golf Club, Berwick-upon-Tweed TD15 1NE

Website: <https://magdalene-fields.co.uk/>

Google Maps: <https://maps.app.goo.gl/KZb6Tajuf1JQXueP9>

### Venue Introduction

Magdalene Fields Golf Club is a coastal golf club in Berwick-upon-Tweed. It is a single level venue. It is next to a Haven Holidays caravan park and the coastal cliff and beach. It has a golf course and an indoor bar and restaurant. It has step-free access but no accessible adapted toilet. It is next to a Haven Holidays Static Caravan Park and a path down to the beach.



### Transport and Parking

The golf club is accessed via Loverose Way, a narrow road which loops from Parade to Northumberland Avenue. It is 10 minutes from Parade to the venue at a leisurely pace or a 1 minute drive. It is 15 minutes from Northumberland Avenue to the venue at a leisurely pace or a 2 minute drive. The road has no pavement and is uneven in parts. There is a stone archway at the intersection with cobblestones that are very uneven. This venue is all on one level and is step free. It has no disabled toilet.



**Bus:** The nearest bus stop is Holiday Centre on Northumberland Avenue which has bus; Berwick Hoppa. The journey from the venue to bus stop is 12 minutes at a leisurely pace.

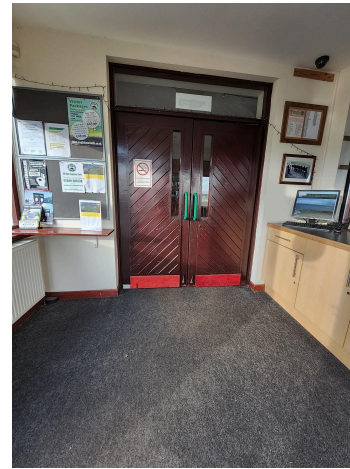
**Train:** The nearest train station is Berwick-upon-Tweed. The journey from the station to the venue is mostly flat and would take 25-30 minutes at a leisurely pace or a 3 minute drive. Some pavements are very narrow.

### Taxis and Cars

The venue has a car park directly outside which can be used for short stay drop-offs or longer stays.

### Entrance

The entrance to the venue is through a non-automated double door up a stone ramp. The ramp is 112cm wide. This takes you into a porch and the venue room is accessed through a second set of non-automated double doors.



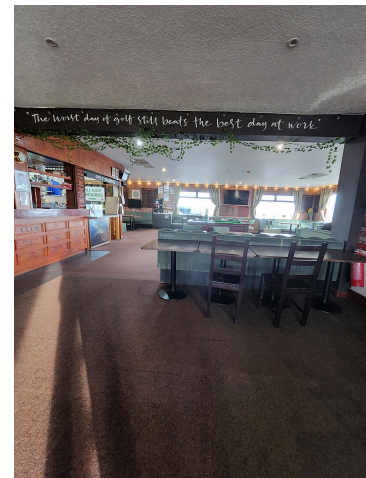
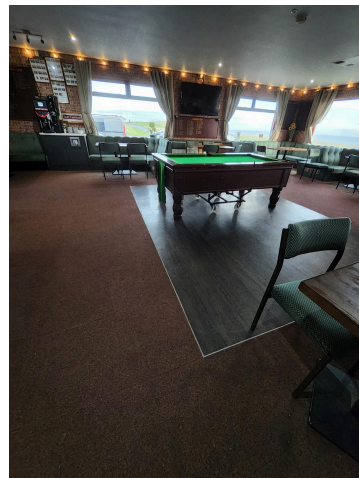
### Venue Physical Access

**Room Description:** The room is an open plan ground floor pub and cafe with a bar. It has booth seating and dining chairs and tables. The colour scheme is quite natural with a lot of wood. There will be a dance floor, DJ table and a projection screen.

**Doorways:** All single doorways, including emergency exits, are 80cm wide. The main entrance double doors are not automated and can be held open.

**Seating:** Booth seating with padded seats and back and no arms. Dining chairs and tables, some chairs have padded seats and backs and no arms and some are wooden hard chairs with no padding and no arms.

**Temperature:** Heated and warm.



### Venue Sensory Access:

**Lighting:** Warm glow fairy lights around the edge of the room, a lot of natural light from windows during the day. In the evening there will be strobe lighting during club events. In the hallways and toilets there are ceiling and wall round shaded fluorescent lights.

**Flooring:** Brown carpet tiles with a dark wooden dance floor, both are smooth.

**Sound:** Ambient noise from the bar, kitchen and other people attending the venue. The music will be loud during DJ sets. The sound is well insulated and outside will be quiet.

**Patterns:** Faux red brick wallpaper on the walls, faux wood wallpaper on the front of the bar and faux dry stone wall wallpaper on the front of the buffet bar.

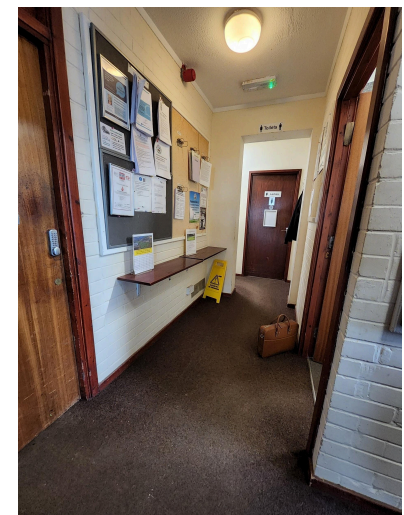
**Smell:** Smells of food and cooking from the kitchen.

**Patterns:** Faux red brick wallpaper on the walls, faux wood wallpaper on the front of the bar and faux dry stone wall wallpaper on the front of the buffet bar.

**Smell:** Smells of food and cooking from the kitchen.

### Toilets

There are no accessible adapted toilets. There are two gendered toilets and there is one cubical in the 'Ladies' toilet that has two grab bars. It is not a widened cubicle and there are no lowered features. The doorways to the cubicles are all 66cm wide and the cubicle is 85cm wide inside. The babychange facilities are also in the toilet marked 'Ladies'.





### **Food and Drink**

Food and drink will be available at this venue. During club events, alcoholic and soft drinks will be available. Snack food will also be available.

### **Emergency Evacuation**

There are three emergency evacuation exits that are marked with greens signs. The step-free evacuation door is the main entrance double doors and down the stone ramp. There are two other evacuation exits that have two small stone steps down to the ground level. One is next to the bar and buffet bar and one is in the toilet corridor. The evacuation meeting point is in the car park outside.



### **Event Description and Access**

Loud music and flashing/strobe lighting. There will be two club nights and one karaoke night at this venue. For further information please visit this webpage:

[https://bfmaf.org/?bfmaf\\_programme\\_line=13343](https://bfmaf.org/?bfmaf_programme_line=13343)

## Venue Name: 22 Bridge Street

**Address:** 22 Bridge Street, Berwick-upon-Tweed, TD15 1AQ

**Website:** No Website

**Google Maps:** <https://maps.app.goo.gl/mH9Ma4BU869zUHGy6>



### Venue Introduction

The inside is a ground floor venue with two levels. There is no step-free entrance, the side entrance has a small shallow step with a metal doorway lip. The venue has some narrow parts to navigate. The venue has no accessible toilet.

### Transport and Parking

**Bus:** The nearest bus stop is Bridge Street which has the bus; Berwick Hoppa. The journey from the venue to bus stop is 2 minutes at a leisurely pace.

**Train:** The nearest train station is Berwick-upon-Tweed. The journey from the station to the venue is mostly flat and would take 20 minutes at a leisurely pace or a 4 minute drive. Some pavements are very narrow.

Taxis and Cars: There is no on street parking. There is a small carpark across the road from the venue called Bridge Street Carpark. This can be used for drop-offs and pick-ups or longer stays up to 2 hours free of charge.

### **Entrance**

There are two entrances into this venue. The shopfront entrance is up two steps. The steps have dark grey tiles with silver contrast edgings. The second entrance is not step-free but offers an option with shallower steps and doorway lips. It is through the dark brown wooden door next to the shopfront door, it's marked 22B. It leads to an alleyway 100cm wide, the flooring is concrete and smooth. The side entrance of the venue is through the first door on the right. Please ask a member at the front door if you require use of this access as it will be closed. The side entrance takes you into the kitchen which requires turning a corner in a confined space, 75cm at the most narrow point, to access the main venue room through a doorway with silver chainlink metal curtains either side of the door.

### **Venue Physical Access**

#### **Room Description:**

An empty shop on two levels with one step between them. The step has a silver contrasting edging. The colour scheme is white and dark blue with light brown varnished wooden floorboards. There is an adjoining small room with a kitchen and single non-accessible toilet.

**Doorways:** The shopfront doorway is 73cm wide. The side entrance doorway is 80cm wide. The doorway between the main room and the small room with a kitchen and toilet is 73cm wide. All doors are single non-automated doors.

**Seating:** 2 bench seats, some stools and metal chairs.

**Toilets:** There is a single toilet in the smaller room in the venue. It has a folding non-automated door that is 61cm wide. The toilet cubicle is small, 62cm wide at the narrowest point from the sink to the wall. It has no accessible features. There are no babychanging facilities.

**Temperature:** Warm

### **Venue Sensory Access**

**Lighting:** Hanging ceiling lights in main room. Fluorescent white light in toilet. Yellow-warm fluorescent light in the kitchen. Natural light from the shopfront window.

**Flooring:** Varnished light brown smooth floorboards in the main room. Dark grey lino in the kitchen, bubbled up in some areas.

**Sound:** Some ambient sound from the street like cars and people passing.

**Patterns:** Cream window grid on the shopfront window. Faux tricolour brick wallpaper in the kitchen. Light brown wooden horizontal panelling in the toilet. Large white, dark grey and

light grey patterned splashback tiles in the toilet. Silver chainlink curtain in the doorway from, the main room to the smaller room.

**Smell:** Neutral

### **Food and Drink**

There is no food and drink available at this venue. There are several cafes and restaurants close by.

### **Emergency Evacuation**

The emergency exits are through the two entrances, either the shopfront entrance or the side entrance through the kitchen. The emergency meeting point is outside on the pavement across the street.

### **Event Description and Access**

The Queer Care Caravan Film Library will be on show at 22 Bridge St:

<https://bfmaf.org/programme/queer-care-caravan/>

# Useful Contacts

## **Mobility Aid Rental**

### **North East Mobility Solutions**

Mobility scooter hire, powerchair rental and wheelchair hire in Berwick-upon-Tweed, throughout North Northumberland, the Scottish Borders and Edinburgh.

Telephone: 01289 331055

**Email: [customercare@nemobility.co.uk](mailto:customercare@nemobility.co.uk)**

## **Taxis**

If you anticipate needing to use a taxi service at any point during your stay, we strongly recommend booking in advance.

### **1st Cab**

01289 545007

<http://www.1stcabberwick.co.uk>

### **A1 Cabs**

01289 308524

[enquiries@a1cabsberwick.co.uk](mailto:enquiries@a1cabsberwick.co.uk)

<http://www.a1cabsberwick.co.uk>

### **Basher's Cabs**

07401 304764

<http://basherscabs.co.uk>

### **West End Cabs**

01289 303050

[info@westendcabs.co.uk](mailto:info@westendcabs.co.uk)

<http://www.westendcabs.co.uk>

Woody's Taxis

01289 547009

[info@berwickupontweedtaxi.co.uk](mailto:info@berwickupontweedtaxi.co.uk)

<https://berwickupontweedtaxi.co.uk>

**Carparks:**

**Northumberland County Council**

### Berwick Parking Places

**Berwick Disc Parking**

Parking Disc Required

No Parking Disc Required

Parking discs can be obtained from local shops, tourist information centres and council offices. Parking discs from other local authorities can be used. Alternatively use a long stay car park where no disc is required.

Parking Place	Car Park No.	Parking Disc Required	Max Stay
Berwick Railway Station Short Stay Car Park	1	NO	20 mins
Hide Hill	2	YES	1 hours
Bridge Street Car Park	3	YES	2 hours
Eastern Lane Car Park	4	YES	2 hours
Chapel Street Car Park	5	YES	2 hours
Chapel Street	6	YES	2 hours
Church Street	7	YES	2 hours
Sandgate	8	YES	2 hours
Castlegate Short Stay Car Park	9	YES	3 hours
Waugh Place Car Park	10	YES	3 hours
Wallace Green	11	YES	3 hours
Woolmarket Car Park	12	YES	3 hours
Woolmarket	13	YES	3 hours
Parade Car Park	14	YES	3 hours
Coxons Lane Car Park	15	NO	All Day
Foul Ford Car Park	16	NO	All Day
Quayside Car Park	17	NO	All Day
Castlegate Long Stay Car Park	18	NO	All Day
Berwick Railway Station Car Park	19	NO	All Day
Castlegate Overflow Car Park	20	NO	All Day

**Carparks:** <https://www.visitberwick.com/what-to-do/find-a-car-park>

**Parade Carpark includes electric vehicle charging station**

**Above map available to download here:**

<https://www.northumberland.gov.uk/NorthumberlandCountyCouncil/media/Parking-documents/Berwick-Town-Centre-Plan.jpg>

**List of Public Toilets on the Town Map available on this webpage:**

<https://bfmaf.org/visit-access/>

**Northumberland County Council Public Toilets in Berwick-upon-Tweed:**

- Castlegate Car Park, TD15 1JS. Accessible, RADAR Key required, 20p honesty box, babychanging facilities are located in the Female toilet
- Eastern Lane superloo, TD15 1AT. Fee 20p.
- Magdalene Fields Golf Club, TD15 1NE. Accessible, RADAR Key required
- The Promenade Spittle, TD15 1RN. Accessible, RADAR Key required, and babychanging facilities are located in the Female toilet
- Woolmarket, TD15 1DH

**Local Saunas and Spa Treatments:**

<https://www.placesleisure.org/centres/berwick-sports-and-leisure-centre/>